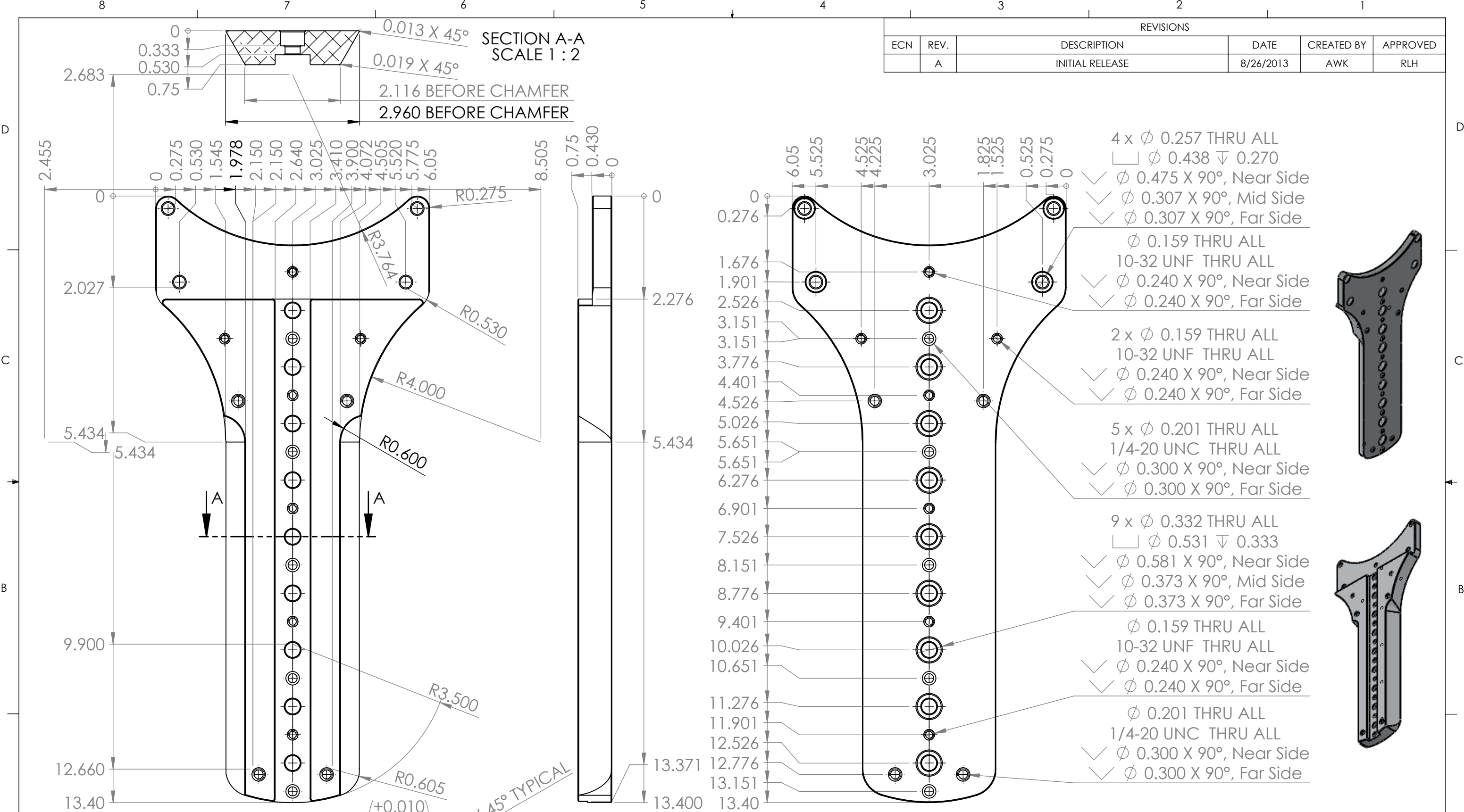


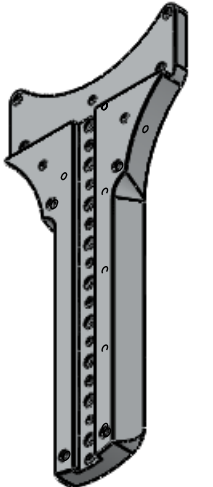
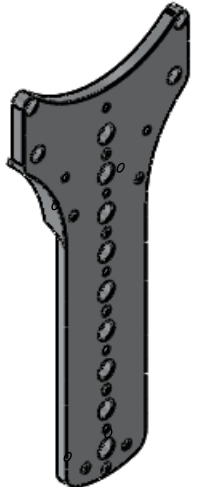
REVISIONS					
ECN	REV.	DESCRIPTION	DATE	CREATED BY	APPROVED
	A	INITIAL RELEASE	8/26/2013	AWK	RLH

SECTION A-A
SCALE 1:2

0.013 X 45°
0.019 X 45°
2.116 BEFORE CHAMFER
2.960 BEFORE CHAMFER



- 4 x ϕ 0.257 THRU ALL
- \square ϕ 0.438 ∇ 0.270
- \checkmark ϕ 0.475 X 90°, Near Side
- \checkmark ϕ 0.307 X 90°, Mid Side
- \checkmark ϕ 0.307 X 90°, Far Side
- ϕ 0.159 THRU ALL
- 10-32 UNF THRU ALL
- \checkmark ϕ 0.240 X 90°, Near Side
- \checkmark ϕ 0.240 X 90°, Far Side
- 2 x ϕ 0.159 THRU ALL
- 10-32 UNF THRU ALL
- \checkmark ϕ 0.240 X 90°, Near Side
- \checkmark ϕ 0.240 X 90°, Far Side
- 5 x ϕ 0.201 THRU ALL
- 1/4-20 UNC THRU ALL
- \checkmark ϕ 0.300 X 90°, Near Side
- \checkmark ϕ 0.300 X 90°, Far Side
- 9 x ϕ 0.332 THRU ALL
- \square ϕ 0.531 ∇ 0.333
- \checkmark ϕ 0.581 X 90°, Near Side
- \checkmark ϕ 0.373 X 90°, Mid Side
- \checkmark ϕ 0.373 X 90°, Far Side
- ϕ 0.159 THRU ALL
- 10-32 UNF THRU ALL
- \checkmark ϕ 0.240 X 90°, Near Side
- \checkmark ϕ 0.240 X 90°, Far Side
- ϕ 0.201 THRU ALL
- 1/4-20 UNC THRU ALL
- \checkmark ϕ 0.300 X 90°, Near Side
- \checkmark ϕ 0.300 X 90°, Far Side



PROPRIETARY AND CONFIDENTIAL
THE INFORMATION CONTAINED IN THIS DRAWING IS THE SOLE PROPERTY OF PLANEWAVE INSTRUMENTS. ANY REPRODUCTION IN PART OR AS A WHOLE WITHOUT THE WRITTEN PERMISSION OF PLANEWAVE INSTRUMENTS IS PROHIBITED.

UNLESS OTHERWISE SPECIFIED
TOLERANCES
DECIMAL DIM
.XXXX ±.0005
.XXX ±.005
.XX ±.02
ANGULAR DIM
MACHINED ±0° 30'
LOCATING ±0° 30'
FORMED ±1°
CHAMFERS ±5°
SURFACE FINISH
MAX R 0.015
BREAK ALL SHARP EDGES & REMOVE BURRS.

DRAWN	NAME	DATE
CHECKED	AWK	8/26/2013
ENG APPR.		
MATERIAL		
6061-T6 AL ALLOY		
FINISH		
BLACK ANODIZE TYPE II		

PlaneWave Instruments		
TITLE		
MOUNT BAR ASCEND SYSTEM		
SIZE	DWG. NO.	REV.
B	600382-1	A
SCALE: 1:5	CAD FILE: 600382-1A	SHEET 1 OF 1