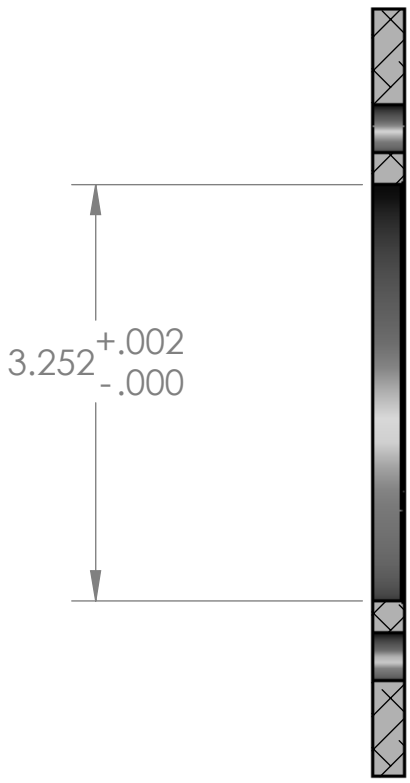
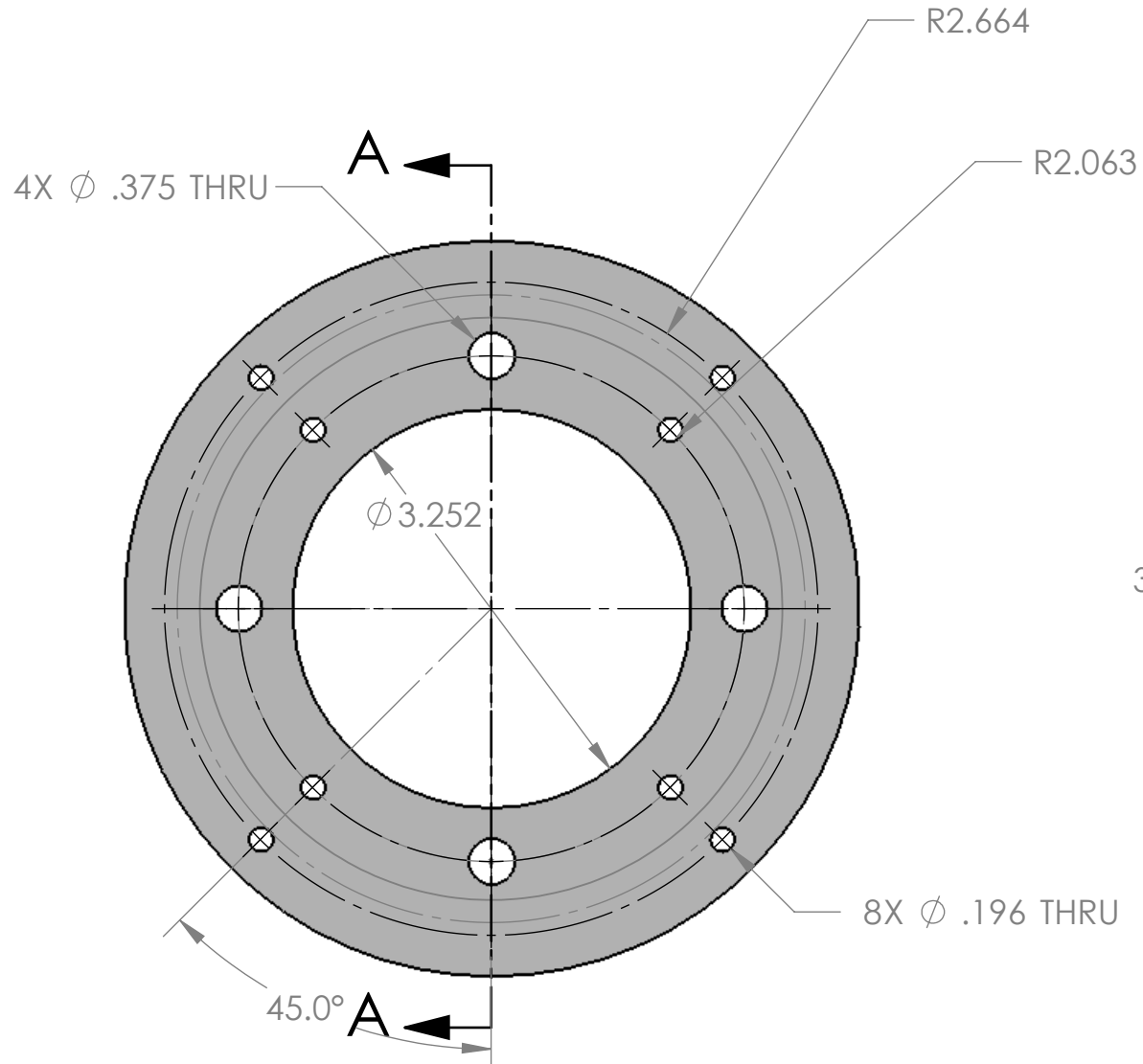
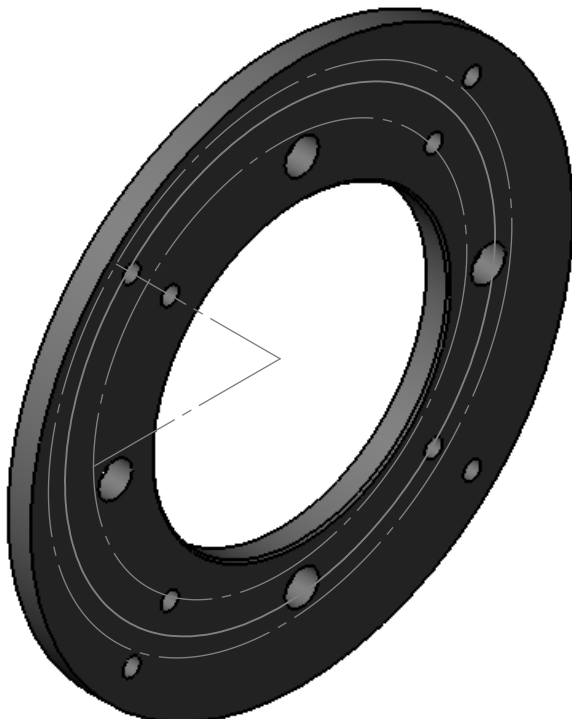
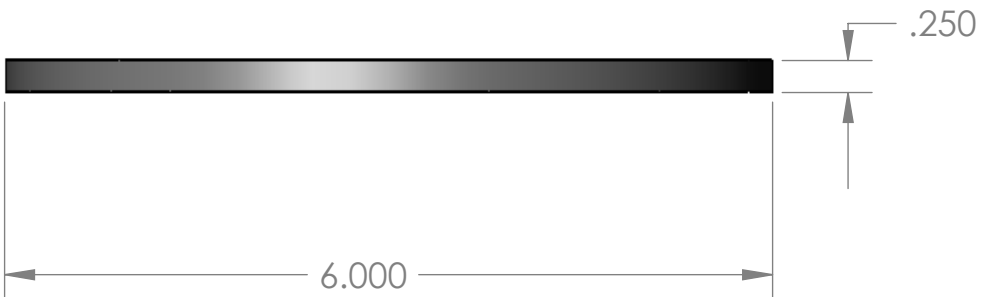


REVISIONS			
REV.	DESCRIPTION	DATE	APPROVED



**NOTES:**

1. REMOVE ALL SHARP EDGES.
2. FINISH: BLACK ANODIZE PER MIL-A-8625, TYPE II, CLASS 2

**SECTION A-A**  
SCALE 1 : 1.5

**PROPRIETARY AND CONFIDENTIAL**  
THE INFORMATION CONTAINED IN THIS DRAWING IS THE SOLE PROPERTY OF PLANEWAVE INSTRUMENTS. ANY REPRODUCTION IN PART OR AS A WHOLE WITHOUT THE WRITTEN PERMISSION OF PLANEWAVE INSTRUMENTS IS PROHIBITED.

UNLESS OTHERWISE SPECIFIED TOLERANCES

DECIMAL DIM .XXXX ±.0005 .XXX ±.005 .XX ±.02	ANGULAR DIM MACHINED ±0° 30' LOCATING ±0° 30' FORMED ±1° CHAMFERS ±5°
---	---

SURFACE FINISH  $\checkmark$  63  
MAX R 0.015  
BREAK ALL SHARP EDGES & REMOVE BURRS.

DRAWN	NAME	DATE
CHECKED	W. ZHOU	12/20/2006
ENG APPR.		
MATERIAL 6061-T6 AL ALLOY		
FINISH SEE NOTE		

PlaneWave Instruments	
TITLE LOW PROFILE SECURE-FIT SPACER 2	
SIZE	DWG. NO.
B	600328
SCALE: 1:2	CAD FILE: 600328A
SHEET 1 OF 1	REV. A