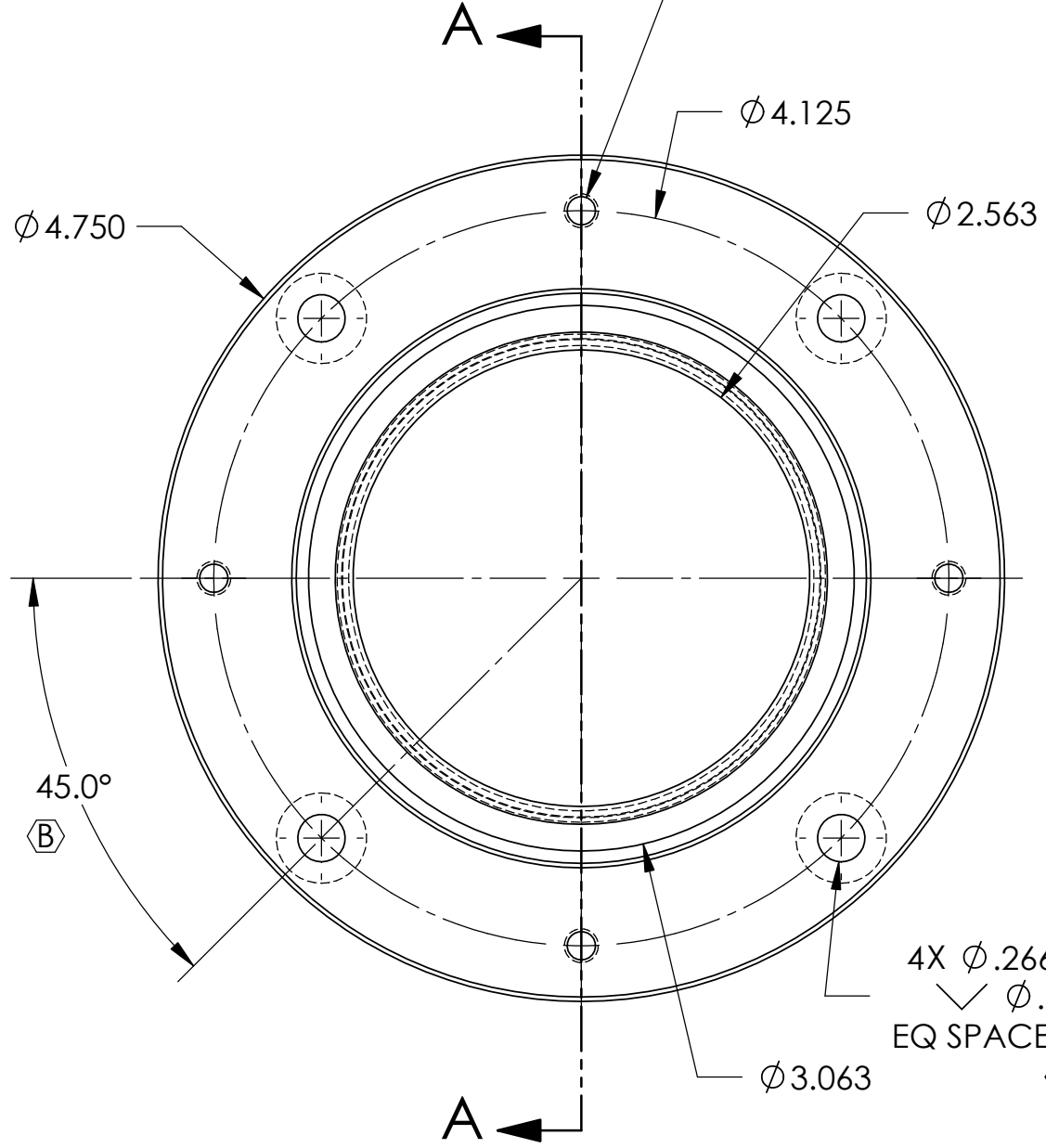


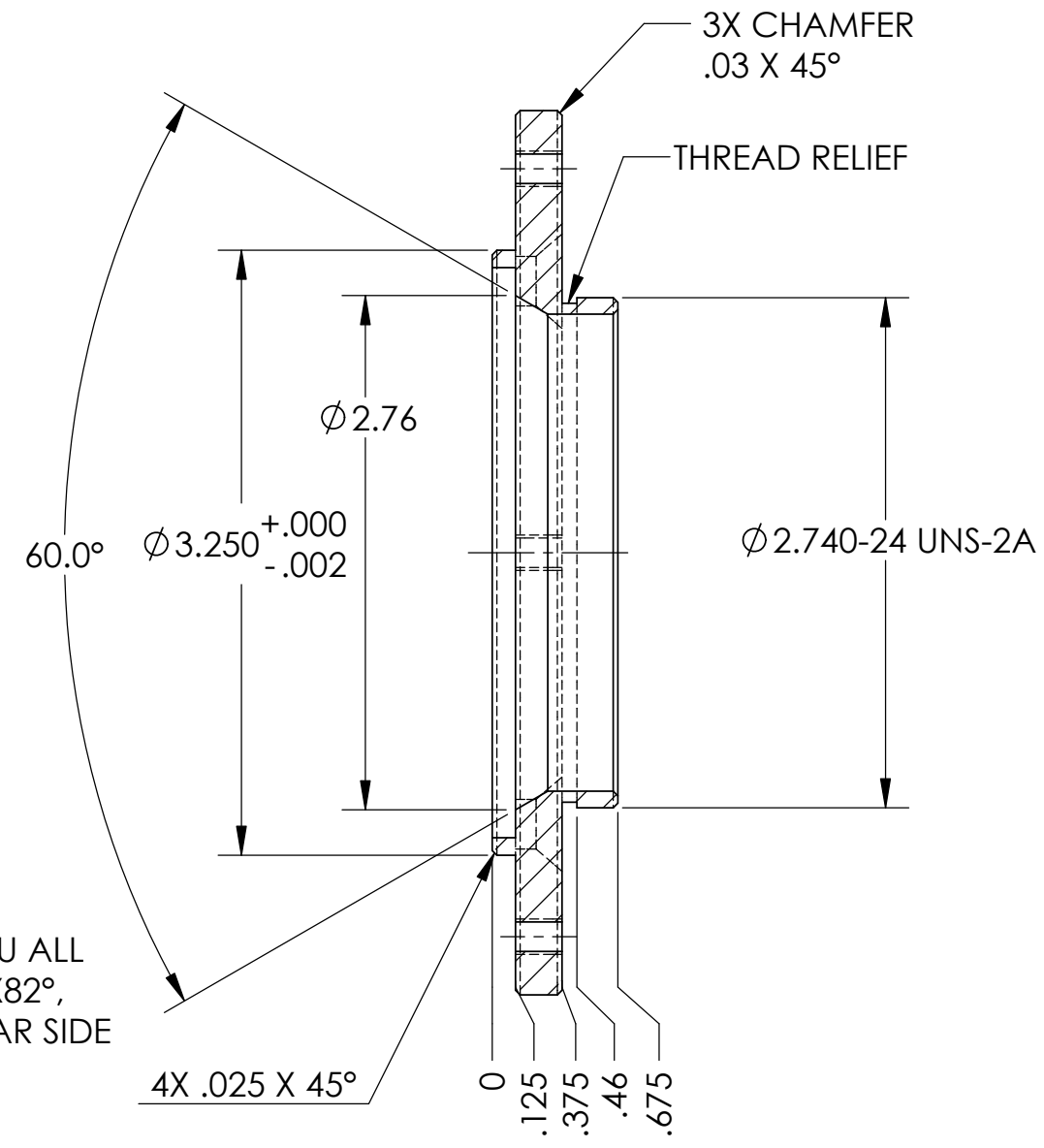
8 7 6 5 4 3 2 1

REVISIONS			
REV.	DESCRIPTION	DATE	APPROVED
B	ECN200391B	6/19/2008	

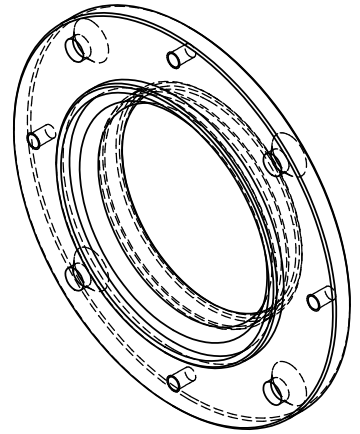
4X  $\phi$ .159 THRU ALL  
10-32 UNF - 2B THRU ALL



4X  $\phi$ .266 THRU ALL  
 $\checkmark$   $\phi$ .507 X 82°,  
EQ SPACED, FAR SIDE



SECTION A-A



NOTES:

1. REMOVE ALL SHARP EDGES.
2. FINISH: BLACK ANODIZE PER MIL-A-8625, TYPE II, CLASS 2

**PROPRIETARY AND CONFIDENTIAL**  
THE INFORMATION CONTAINED IN THIS DRAWING IS THE SOLE PROPERTY OF PLANEWAVE INSTRUMENTS. ANY REPRODUCTION IN PART OR AS A WHOLE WITHOUT THE WRITTEN PERMISSION OF PLANEWAVE INSTRUMENTS IS PROHIBITED.

UNLESS OTHERWISE SPECIFIED TOLERANCES  
DECIMAL DIM .XXXX±.0005 .XXX±.005 .XX±.02  
ANGULAR DIM MACHINED ±0° 30' LOCATING ±0° 30' FORMED ±1° CHAMFERS ±5°  
SURFACE FINISH 63  
MAX R 0.015  
BREAK ALL SHARP EDGES & REMOVE BURRS.

DRAWN	NAME	DATE
CHECKED	BP	5/9/08
ENG APPR.		
MATERIAL		
6061-T6 AL ALLOY		
FINISH		
SEE NOTE		

<b>PLANEWAVE Instruments</b>	
TITLE	
PWI TO AP MALE THREAD	
SIZE	DWG. NO.
B	200392
SCALE: 1:1	CAD FILE: 200392B
SHEET 1 OF 1	REV. B

8 7 6 5 4 3 2 1