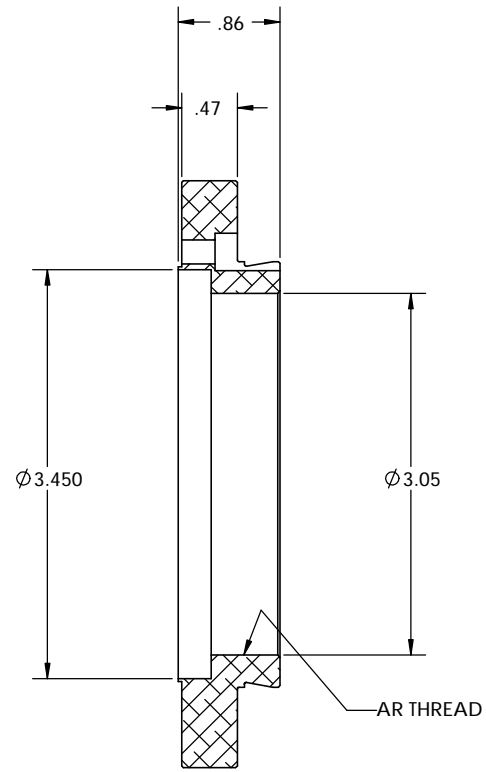
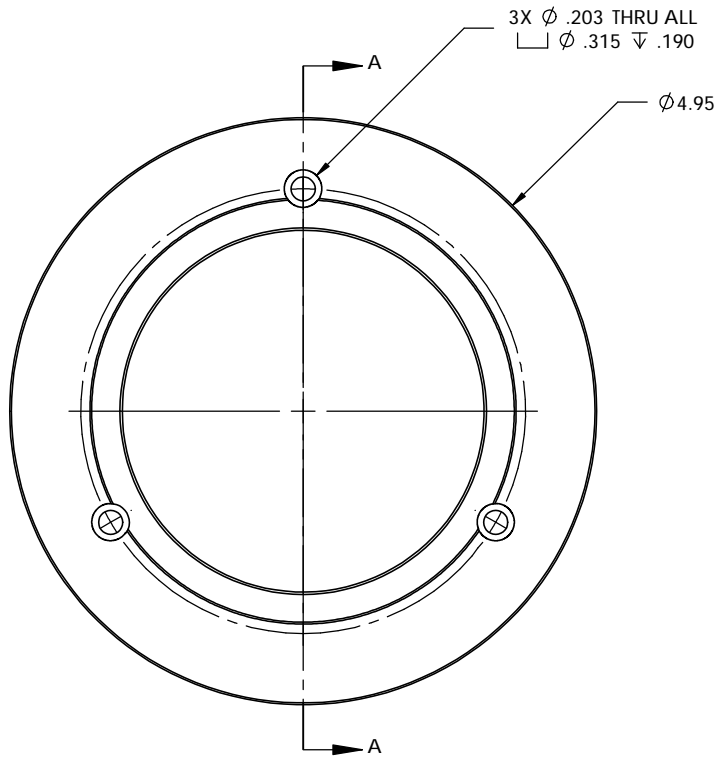
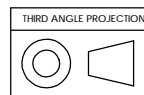


PN 5042
 STK NO 19803



SECTION A-A
 SCALE 1 : 1



| | | | | | |
|------------------------------|--|------------|------|--------------|---------------------------|
| UNLESS OTHERWISE SPECIFIED: | | NAME | DATE | Optec Inc. | |
| DIMENSIONS ARE IN INCHES | | DRAWN | BV | 021/7/10 | TITLE: OGS 12.5 |
| TOLERANCES: | | CHECKED | | | |
| ANGULAR: ±1 | | ENG APPR. | | | |
| TWO PLACE DECIMAL ±.003 | | MFG APPR. | | | |
| THREE PLACE DECIMAL ±.007 | | Q.A. | | | |
| MATERIAL 6061 T6 ALUMINUM | | Contract | | SIZE | DWG. NO. |
| FINISH SATIN-ETCH BLACK | | OPTEC-3600 | | B | 17-06707 |
| DO NOT SCALE DRAWING | | | | SCALE: 1:2 | WEIGHT: |
| | | | | SHEET 1 OF 1 | |

D
C
B
A

D
C
B
A

8 7 6 5 4 3 2 1

8 7 6 5 4 3 2 1