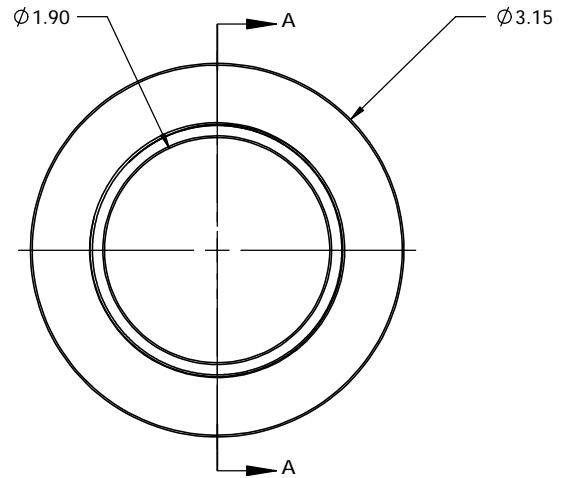
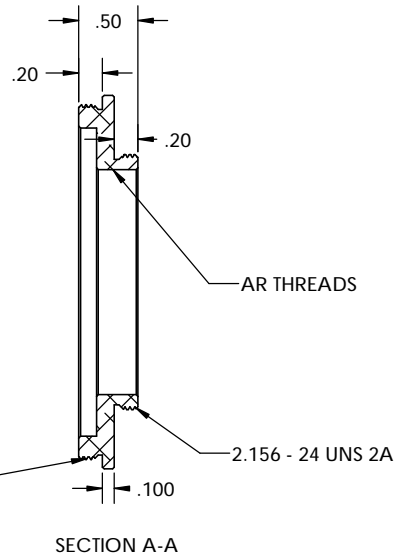


PN 5166
STK NO 19372



UNLESS OTHERWISE SPECIFIED:		DRAWN	NAME	DATE	Optec Inc.
DIMENSIONS ARE IN INCHES		CHECKED	LD	09/17/10	
TOLERANCES:		ENG APPR.			
FRACTIONAL ±		MFG APPR.			
ANGULAR: MACH ± BEND ±		Q.A.			TITLE:
TWO PLACE DECIMAL ±.007		CONTRACT			3.000 - 24 TO 2.156 - 24
THREE PLACE DECIMAL ±.003		MATERIAL			SIZE
THIRD ANGLE PROJECTION		6061-T6			DWG. NO.
FINISH		SEE NOTES			B 19-03812
DO NOT SCALE DRAWING		3.000 - 24 TPI ADAPTERS			SCALE: 1:1
				WEIGHT:	SHEET 1 OF 1

D
C
B
A

D
C
B
A

8 7 6 5 4 3 2 1

8 7 6 5 4 3 2 1