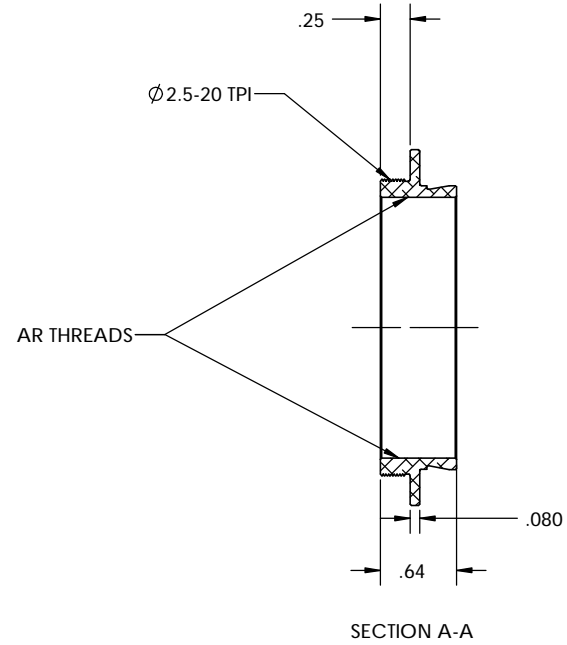
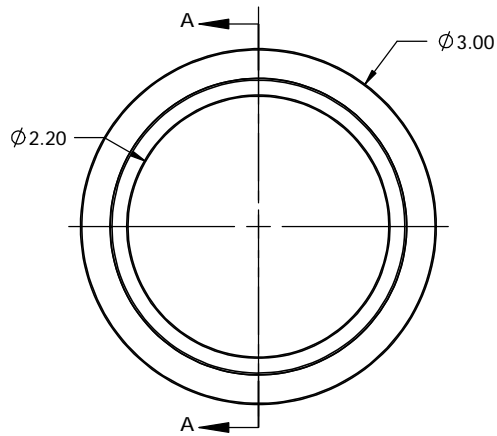


PN 4829  
STK NO 17962



UNLESS OTHERWISE SPECIFIED:	DRAWN	NAME	DATE	<b>Optec, Inc.</b>	
	CHECKED	LD	12/30/08		
DIMENSIONS ARE IN INCHES	ENG APPR.			TITLE:	
TOLERANCES:	MFG APPR.			APOGEE D07 TO IFW (REVERSE)	
FRACTIONAL ±	Q.A.			CONTRACT	
ANGULAR: MACH ± BEND ±	MATERIAL		OPTEC-2400		SIZE DWG. NO.
TWO PLACE DECIMAL ±.007	6061-T6		B		17-06329
THREE PLACE DECIMAL ±.003	FINISH FROSTKOTE BRIGHT DIP BLACK		SCALE: 1:1		WEIGHT:
DO NOT SCALE DRAWING					SHEET 1 OF 1